



# INSTALLATION INSTRUCTIONS

## PARQUETRY COLLECTION



**Mikasa®**  
REAL WOOD FLOORS

## INSTALLATION INSTRUCTIONS FOR MIKASA REAL WOOD FLOORS

These instructions are for all Mikasa Floors – Parquetry Collection,  
Please read the complete installation instructions before beginning installation.

**The flooring is recommended to be installed using a glue-down method. It can also be installed as a floating floor; however, tongue-and-groove connections must be glued.**

**THE PRODUCT MUST BE GLUED-DOWN OR FASTENED DOWN TO THE SUBFLOOR IN CERTAIN CIRCUMSTANCES (E.G., STAIRCASES OR AREAS LARGER THAN 100 M<sup>2</sup>). IF YOU THINK A GLUE-DOWN INSTALLATION IS REQUIRED, PLEASE CONSULT MIKASA FOR INSTALLATION GUIDANCE.**

This product may be installed:

- In rooms, on, above or below ground level
- Over plywood, OSB or concrete subfloors or directly over existing hard surfaces
- This product may be installed over a radiant heating system if:
  - o The floor is NOT made with Jatoba or Maple hardwood. These wood types must not be used with radiant heating systems.
  - o The installation conforms to MIKASA special Instructions for Installation over radiant Heat. Detailed installation procedures are described in our Installation Guide. Download it directly from [www.mikasafloors.com](http://www.mikasafloors.com)

**\*NOTE: SPECIAL INSTRUCTIONS FOR INSTALLATION OVER RADIANT HEAT ARE MENTIONED IN THIS BROCHURE. THESE INSTRUCTIONS APPLY ONLY TO THOSE PRODUCTS OF FLOORING THAT ARE SPECIFICALLY APPROVED FOR USE OVER RADIANT HEAT AND MEET THE CONDITIONS GIVEN ABOVE. INSTALLATION OF NON-APPROVED PRODUCTS OR INSTALLATION OF APPROVED PRODUCTS IN A NON-APPROVED MANNER, OVER RADIANT HEATING SYSTEMS WILL VOID THE PRODUCT WARRANTY.**

This product should NOT be installed in bathrooms or laundry rooms.

### INSTALLER'S / OWNER'S RESPONSIBILITY

Since wood is a natural product, it contains inherent variations in colour, grain, appearance and other visual imperfections. MIKASA floors are manufactured in accordance with industry standards which permit a defect tolerance not to exceed 5%. These defects may be the result of manufacturing or naturally occurring characteristics of the material. It is recommended that a 5% cutting or grading allowance be added to the total square footage when calculating the quantity of flooring required. It is the sole and joint responsibility of the installer and owner to conduct a quality inspection of all pieces of MIKASA flooring before installation. Any piece of flooring that appears to contain a manufacturing defect should not be installed. Flooring that has been installed will be deemed to have been inspected and accepted by the installer and owner, even if the owner is not present at the time of installation. If a defect is found, please contact your dealer.

It is the sole responsibility of the installer to ensure that the job site, subfloor and installation tools and materials meet or exceed all applicable industry standards.

MIKASA accepts no responsibility for problems arising from incorrect or improper site preparation or installation procedures. Check local building codes and bylaws before commencing installation to ensure compliance with local requirements. In the event of a discrepancy between local codes and manufacturer's guidelines, local codes should be followed.

### SITE PREPARATION:

#### Installation in newly-constructed home

Installation of flooring is one of the last jobs when constructing a home. Before you install your MIKASA Real Wood Floor, ensure that:

- The building is completely enclosed with all doors and windows in place, including a door from an attached garage to the interior of the house
- All concrete, masonry, plastering, drywall, texturing, painting and other wet work is complete and dry
- Basements and crawlspaces are dry; Crawlspaces must have no standing water; crawlspaces must also have a vapor barrier and adequate ventilation in accordance with local building codes.
- Gutters and downspouts are in place, directing water away from the building
- HVAC systems are fully operational, enabling heat and humidity levels to be controlled and maintained throughout the structure
- Subfloor is properly prepared for installation
- If installing over radiant heat, ensure that the system is in full working order and has been fully tested and running for a minimum of two weeks prior to installation. The system should be turned off for 24 hours prior to installation in the install zone.

#### Installation in existing home (Renovation)

Installation in an existing home must meet the same conditions as a new home. If part of a larger remodeling project, ensure that all wet work (painting, wallpapering, texturing, etc.) is completed and thoroughly dry before commencing installation of the floor. In addition:

- Remove all furniture, artwork and other valuables from installation area
- Remove skirting and profiles
- Undercut door casings (use a piece of flooring as a depth gauge)
- Remove existing flooring, if necessary (Carpets and underlay must be removed, but most of the MIKASA floors with can be installed directly over most other flooring types, including sheet or tile vinyl, ceramic, parquet, etc. Ask your dealer in case of any doubt.)
- If installing over radiant heat, it is strongly recommended that a radiant heat technician be consulted prior to installation. All to ensure that the heating system can be operated effectively at temperatures acceptable to MIKASA flooring. The system should be turned off in the install zone for 24 hours prior to installation. (Installation instructions for Underfloor heating and thermal conductivity can be downloaded from [www.mikasafloors.com](http://www.mikasafloors.com))

## Climate control and acclimatization

Conditions at the job site must be maintained between 65-75°F (18-24°C) and humidity at 35% - 55% before, during and after the installation. Flooring material should not be delivered to the job site until these conditions have been met and maintained for one week prior to installation if installing over a wood subfloor and two weeks if installing over concrete. Following installation, these conditions should be maintained at all times to ensure proper performance of the floor.

When temperature and humidity have met the conditions detailed above, material may be delivered to the job site. While stacking the boxes, cross-stack to ensure good air flow between layers. Do not lay boxes directly on concrete subfloors; elevate them on blocks. Do not open the boxes; leave them closed until conditions are perfect for installation, then open as and when needed.

Maintain RH below 60% in storage area for wood flooring. Abstain from opening flooring packaging until you are ready to install. Open the packs only when needed during installation.

Ensure that the material has a minimum temperature of 18°C (prior to installation). It takes approximately two or three days storage in a heated site before the bundles reach the correct temperature and acclimatizing to the installation environment. The temperature and acclimatization can be reached more quickly if the floor packs are stacked in several small piles rather than a single pile.

Repair damaged protective plastic with tape to prevent further moisture damage to the contents.

## Subfloor preparation

Like many home improvement projects, one of the most critical parts of installing MIKASA flooring is to make sure the surface is properly prepared before installing the product. So take the time to do this step completely and thoroughly.

The installer and customer are jointly and solely responsible for ensuring that the subfloor is suitable for flooring and properly prepared for installation.

All subfloors must be clean, dry, structurally sound and flat by 1/8" in 8' (or 3 mm in 1 m). Plywood subfloors must meet local building code requirements (US: minimum 3/4" (19 mm) T&G plywood or 23/32" (18 mm) T&G OSB. Canada: minimum 5/8" (16 mm) T&G plywood or 3/4" (19 mm) T&G OSB). They must be secure to the joists, free of squeaks and protruding fasteners.

## Moisture content

All subfloors must be tested for moisture content according to NWFA guidelines, and the moisture content of both subfloor and flooring must be within allowable limits before commencing installation. The moisture content of plywood or OSB subfloor must not exceed 12%. The moisture content of the flooring must be within 4% points of the subfloor.

Concrete subfloors must be fully cured (60 days) prior to installation. Moisture content of the slab should not exceed 3 lb./1000 sq./ft./24 hours.

If the flooring is being installed over a radiant heating system, moisture content of the slab should not exceed 2 lb./1000 sq./ft./24 hours. The system should be turned off in the installation zone for 24 hours before installation begins and left off for the duration of the installation period.

## Colour racking

MIKASA flooring being a natural product contains natural variations in colour and has grainy patterns. In order to prevent colour "grouping" or repetitive grain patterns in the finished floor, it is recommended that boards be racked (visually sorted) before installation to create a satisfactory and pleasing colour arrangement. Immediately prior to installation, unpack 1 or 2 cartons to get a sense of the range of color variation and arrange the boards to achieve a satisfactory appearance.

While racking, inspect all boards for visible manufacturing defects. Boards with manufacturing defects in excess of industry standards (5% of total quantity) may be replaced by the dealer under the terms of the product warranty. Once installed, boards will be considered to have been accepted by the customer and will not be eligible for replacement.

(See Warranty for details.)

## Expansion space

MIKASA Real Wood Floors will expand and contract with changes in ambient temperature and humidity. To allow for this, during installation, leave a 3/8" (10mm) expansion space around the entire perimeter of the floor between the flooring and walls. Also leave some space between the flooring and any vertical obstacle, such as stairs, pipes, door sills, tiles, cabinets, etc.

NOTE: In climates with extreme variations in humidity (beyond the range of 35 to 55%), or in large installations 75+ sqm (800+ feet), a larger expansion space may be required.

If installing the floor in floating system in a room measuring more than 30 ft. (10m) by floorboard width, or more than 30 ft. (10m) measured by board length, leave an expansion gap in the center of the space and cover it with an expansion profile (T-cap). The gap should be wide enough to allow 3/8" (10mm) expansion space on each side of the T-cap base. An expansion gap and T-cap should be used in any door threshold where the flooring is being carried through into an adjoining room.

**The floor must be able to move free – do not connect or install close to any construction part.**

**Rooms with off square areas like for example L-, F-, T-, U- shapes, separate the areas with an expansion joint and especially always in door openings.**

## Special Instructions for Installation Over Radiant Heat

If installing over radiant heat, place approved heat sensors on the subfloor in accordance with MIKASA Special Instructions for Installation over Radiant Heat. A minimum of 5 sensors must be placed for every 1000 square feet of flooring installed. Installation instructions for radiant heating and thermal conductivity can be downloaded from [www.mikasaflfloors.com](http://www.mikasaflfloors.com)

## Vapour Barrier & Underlay

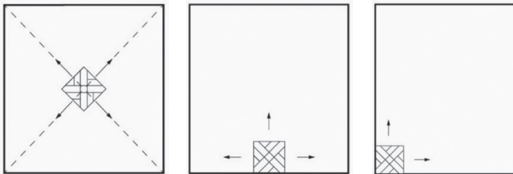
If the flooring is being installed as floating system on a concrete sub-floor, or over a crawlspace, or below ground level, a vapor barrier must be installed. An underlay that reduces impact sound & vapour must be laid under the planks. For example, use MIKASA VaProtect or moisture barrier and Underlay/felt paper as an intermediate layer. Seal the seams with duct tape along their entire length. Leave an excess of 4" (100mm) of sheeting extending up the wall at all outer edges and hold in place with blue or painter's masking tape. (This excess will be trimmed away later.)

## INSTALLATION INSTRUCTIONS FOR MIKASA WOOD FLOORS WITH MIKASA PARQUETRY.

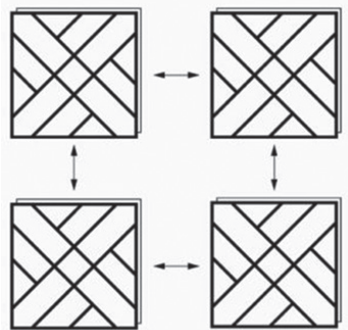
1. Floating installation on level and solid substrates complete installation instructions are provided in every other pack. Use Mikasa installation tools

### PREPARATION

- Check if the installation requires a vapour barrier, do not forget it.
  - Calculate how many floor boards are required first. If the last row is less than 30 mm wide, cut the first row, too. When installing floors with Mikasa™ Planklok; it will be easier if you start on the side with more doors. If there are doors along the short side of the room, begin each row of boards there. The boards can be installed from both left and right.
  - The limit for floor width is 10 metres. If the floor is wider, contact Mikasa.
2. Determined the direction of the installation as below pictures. Dry-laying the pattern can help to visualize the layout and avoid errors during the actual installation.
  3. In general, when a wood floor is laid out in a repetitive pattern, such as with parquetry, the pattern should be balanced within the space. When the parquetry pattern is installed wall-to-wall in a room that is not symmetrical, or when the pattern flows from one room to another, the floor pattern may not be balanced in all rooms.
  4. With any parquetry patterned floor, use the center layout method to transfer and adjust your starting lines according to the most aesthetically or architecturally important elements in the rooms, taking into consideration doorways, fireplaces, cabinets, and transitions, as well as the dimensions of the pattern and the overall squareness of each room. (Refer to the Layout chapter for more-detailed information.)
  5. In order to properly layout the parquetry pattern within the given space, the dimensions of the pattern should be taken into account.
  6. The layout includes finding the center of the pattern to help identify the best balance within the space. Base your working line measurements on these dimensions and the room characteristics where the flooring will be installed. Transfer lines as necessary to where the flooring installation will begin.
  7. Use the dimensions of the parquetry pattern to snap chalk lines across the subfloor indicating where each run will lie. This will allow you to know where to apply adhesive during the installation as well as to maintain straight lines during install.
  8. Verify all measurements before proceeding with installation and application of adhesive.



9. Pre-Mixing Panels for Uniformity. As wood is a natural material, variations in colour and grain are to be expected. To achieve a more uniform appearance, mix panels from different boxes during installation.
10. Apply the wood adhesives in the groove locking element in a bead line format.
11. Clean Excess Adhesive: Wipe away any excess adhesive immediately using a slightly damp cloth.
12. Install the board according to below figure and continue the installation.



13. Pattern Alignment: Maintain precise alignment of the intricate Parquetry pattern throughout the installation.
14. Complete the whole installation by installing the skirtings.

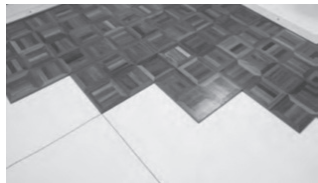
## INSTALLATION AND FITTING GUIDE USING GLUE DOWN SYSTEM

1. There are two primary methods for installing Mikasa Parquetry: glue down and floating. For a high - end look and maximum durability, the glue - down method is preferred. Ensure that the adhesive you choose is suitable for the wood type and subfloor.
2. In glue down installation there is no underlay required, and it is not required to leave expansion gaps for every 10 meters into sections like in floating installation.
3. Apply the Adhesive: Spread the adhesive evenly onto the subfloor using a v-notch trowel (usually 8mm notches). Only apply enough adhesive that can be covered within 30 minutes.
4. Lay the Panels: Position the panels onto the adhesive and gently tap them into place using a rubber mallet.
5. Expansion space should be a minimum of 10 -15 mm around the perimeter and all vertical obstructions, unless otherwise directed by the flooring manufacturer.
6. After both chalk lines (at 90 °C to each other) have been snapped, start spreading the adhesive in the first laying area. Be careful not to spread adhesive beyond the chalk line or beyond your manageable workspace.
7. Immediately lay the parquetry board in the newly spread adhesive, unless the adhesive requires flash time (check with the adhesive manufacturer).
  - a. Do not lay the floor tiles on dry or skinned over adhesive. If the adhesive becomes dry, scrape it up and spread more.

It is important to remember to stand or kneel on the subfloor during the installation to avoid shifting the installed parquet tiles.
8. Proper placement of the first parquetry board is the key to the entire installation.
  - a. Carefully place the first tile squarely into position at the point where the center lines cross. It is very important to lay the first few tiles perfectly on the chalk lines as this step will affect the entire installation. Do not use the edge of the tongue for aligning the tile on the chalk lines.



- b. Place boards firmly against the adjoining boards and press into adhesive. Gently lock in the tongue and groove between the floor boards when applicable.
  - c. Do not push, hammer, or force the boards too strenuously as this could cause the tiles to move and misalign the squareness of the layout. Where you are able, set backer rail along the chalk lines, providing a firm framework to apply force when engaging panels while not forcing the pattern out of square.
9. After you have positioned several boards along the working lines, begin stair-stepping the boards into a progressive diagonal (or multilateral) pattern where two sides are always engaging two laid panels, progressing from the center outward until wall lines are reached. This ensures both a balanced install and the "squareness" of the installation.



10. Tapping blocks and pull-bars may be used to drive boards tight during installation. Be certain to only use tapping blocks & pull-bars that do not damage the flooring.
11. Periodically lift boards immediately after installation and at regular intervals to ensure proper coverage and adhesive transfer to the back of the tiles from subfloor is achieved.
12. Use quick-release tape, straps, or tensioners to maintain a tight floor when necessary, and as suggested by the adhesive manufacturer.
13. If recommended by the adhesive manufacturer, roll the floor with the proper weighted roller.
14. Clean all adhesive residue from the flooring surface using a proper adhesive remover as recommended by the adhesive and flooring manufacturer. Be sure to use the recommended cleaner to remove any residue that may have been left from the proper adhesive remover. Do not use a product or process that could damage the finished flooring.
15. Allow the floor to set for at least 24 hours, or as otherwise directed by the adhesive manufacturer, before allowing foot traffic.
16. Be sure the adhesive has had adequate time to dry and finish off-gassing before any topcoats of finish get applied to the floor.
17. To finish the job, trim away the excess vapour barrier around the perimeter of the floor and remove the expansion spacers. Install profiles, trim and transitions. Profiles and transitions must be affixed either to the subfloor or to the wall – never to the flooring itself.
18. Before you move furniture onto the floor, take a moment to protect your new floor by putting felt pads on all furniture and accessories. For complete care and maintenance instructions, consult the product warranty or download the Maintenance & Repair Guide. Download it from our website [www.mikasafloors.com](http://www.mikasafloors.com). Please read thoroughly before you begin using your Mikasa Floors – Parquetry Collection.
19. If the flooring was installed over a radiant heating system, when you turn the system back on bring the temperature of the system up gradually, in 5% increments. Never allow the surface temperature of the floor to exceed 82°F (28°C) and avoid dramatic temperature changes; always adjust the system gradually in 5% increments. It is recommended that a dedicated quick recovery thermostat be installed to allow the temperature of the radiant heating system to be accurately control.



A Product Of



**Greenlam**  
Industries Limited

Greenlam Industries Limited

2nd Floor, West Wing, Worldmark - 1, IGI Airport Hospitality District, Aerocity, New Delhi - 110 037.

For a real experience with real wood, SMS <MIKASA> to 53030 or call on Toll free no.: 1800-833-0004. [info@mikasafloors.com](mailto:info@mikasafloors.com)